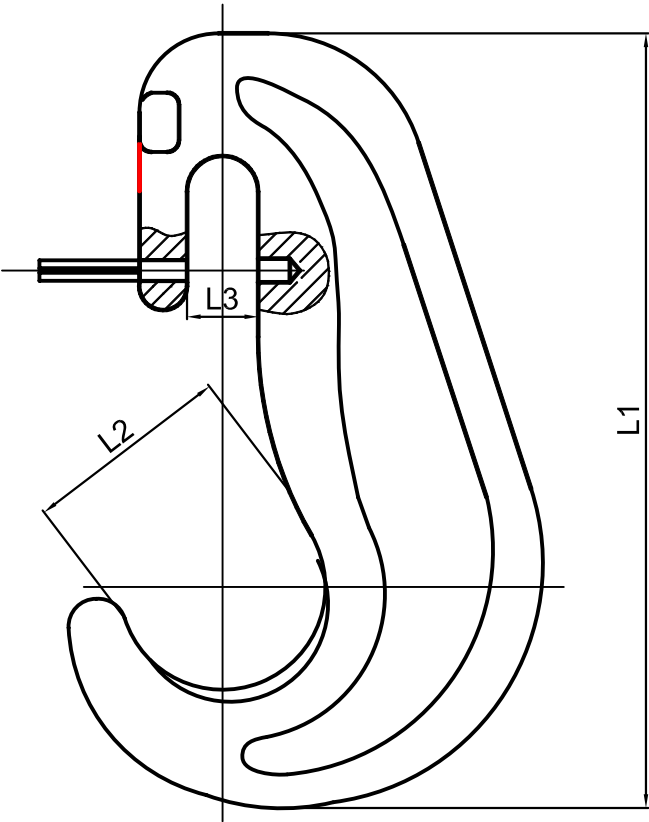


C shape type H-13(11 / 9)C



Specifications:

Classification: All items are approved by major classification societies
Materials: Forged steel
Finish: Painted
Remark: Other dimensions, materials and finish upon request

CHAIN DIA	MODEL NO.	L1	L2	L3	B.L.	WEIGHT
13mm	H-13C	196mm	52mm	18mm	200KN	1.3kg
11mm	H-11C	174mm	45mm	15mm	150KN	0.9kg
9mm	H-9C	152mm	38mm	12mm	100KN	0.5kg